

# COVID-19 Symptom Decision Tree\*

(Version: 1/28/2021)

\*Applies regardless of vaccination status



**At school, student or staff member develops any one of the following signs or symptoms:**

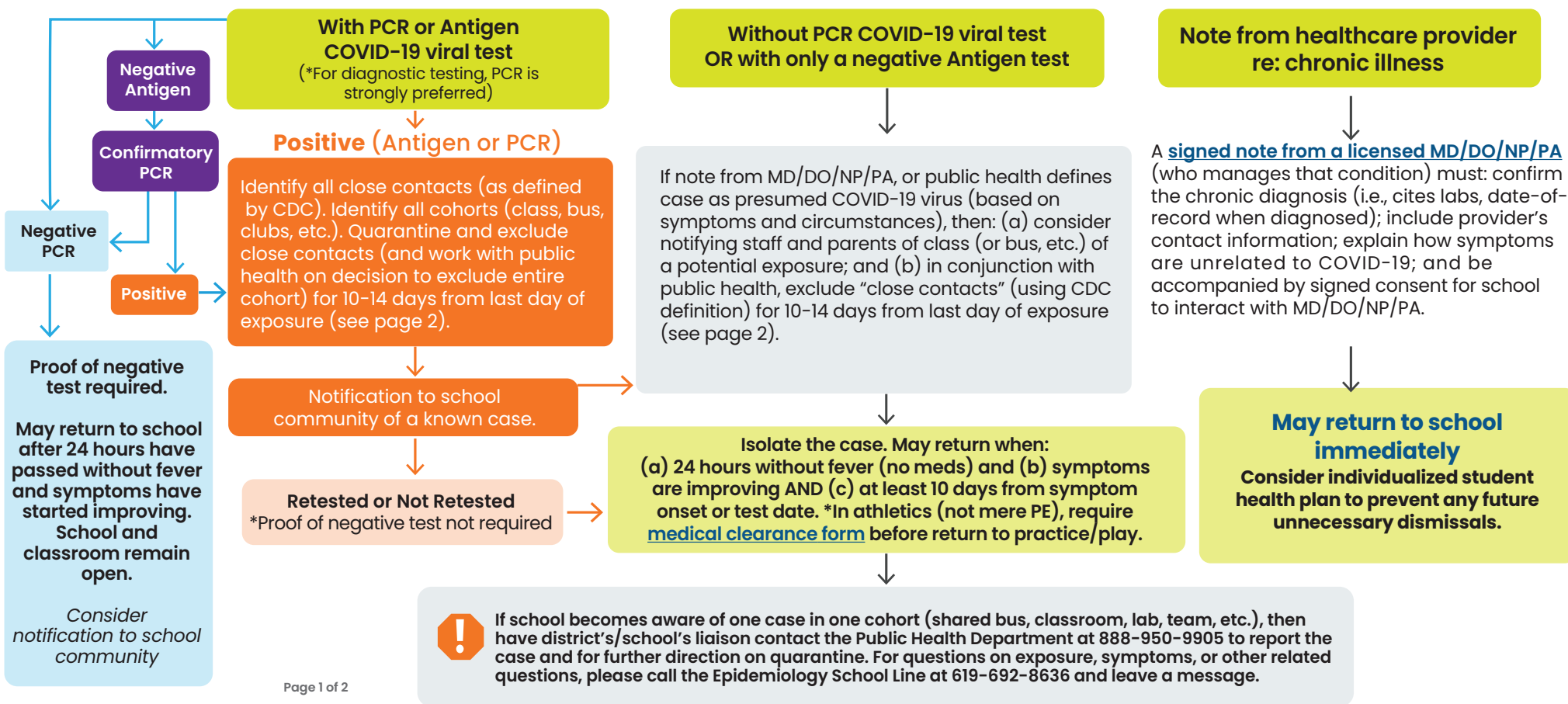
- Fever with or without chills/rigors (fever defined as  $T \geq 100.0$  that does not resolve within 30 min. without medication)
  - Cough\*
  - Shortness of breath
  - Nasal congestion/rhinorrhea (runny nose)\*
  - Sore throat
  - Nausea, vomiting, or diarrhea\*
  - Fatigue\*
  - New loss of taste/smell
  - Headache\*
  - Muscle or body aches\*
  - Poor feeding or poor appetite\*

\* Disregard this symptom if school personnel already aware of a chronic, pre-existing condition that causes the symptom. The nature of the presenting symptom (e.g., duration, intensity) must be consistent with the underlying chronic condition.

**ACTION:** Apply appropriate PPE; isolate student/staff member until sent home; recommend they reach health care provider for instructions. Note: Other infections can cause same symptoms (e.g., flu, strep, etc.) *but these do not rule out COVID-19 as co-occurring*



## STUDENT / STAFF TO STAY HOME UNTIL...



# Order of the Health Officer

## Quarantine of Persons Exposed to COVID-19

A "close contact" is a contact with a COVID-19 patient that occurs anywhere between 48 hours before the COVID-19 patient's symptoms began (or, for asymptomatic patients, two days prior to test specimen collection), and until the COVID-19 patient is no longer required to be isolated, and the contact:

- 1 Were within 6-feet of a COVID-19 patient for a cumulative total of 15 minutes or more over a 24-hour period; or
- 2 Had unprotected contact with the body fluids and/or secretions (including, but not limited to, being coughed on or sneezed on, sharing utensils, or drinking out of the same container) of a COVID-19 patient.

All persons without COVID-19 symptoms who have had close contact with a COVID-19 patient must immediately take quarantine themselves in their home or another residence. They may end quarantine and return to school/work after:

- **10 days** (e.g., on the 11th day) after the last contact with a COVID-19 patient **as long** as they can self-monitor for **COVID-19 symptoms** and **consistently use face covering and distance at least 6 feet** from all others through Day 14.
- **14 days** (e.g., on the 15th day) after the date of last exposure if they **cannot** self-monitor for **COVID-19 symptoms** nor consistently use face covering and distance at least 6 feet from all others after a 10-day quarantine or work with severely immunosuppressed persons (e.g., bone marrow or solid organ transplants, chemotherapy).
- Negative COVID-19 test results will not shorten the time for these individuals.
- **If symptoms occur during quarantine**, individuals should immediately self-isolate and contact their healthcare provider or San Diego County Public Health Services and seek testing.



NOTE: 7-day quarantine rarely applies in the K-12 school setting and only applies to healthcare workers; for further guidance see this [memo](#).

